

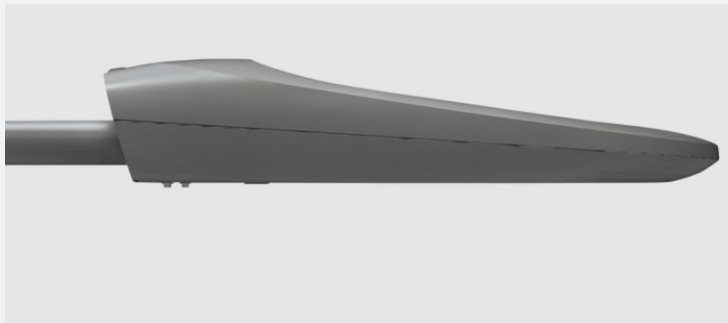
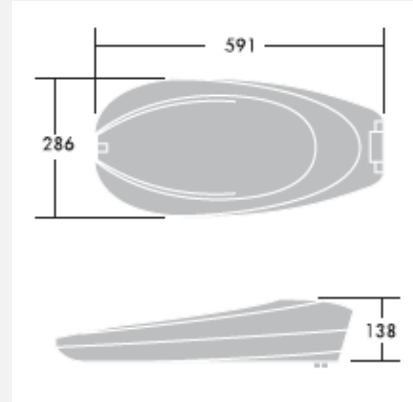
# OXANE NEO



**ZUMTOBEL** Group

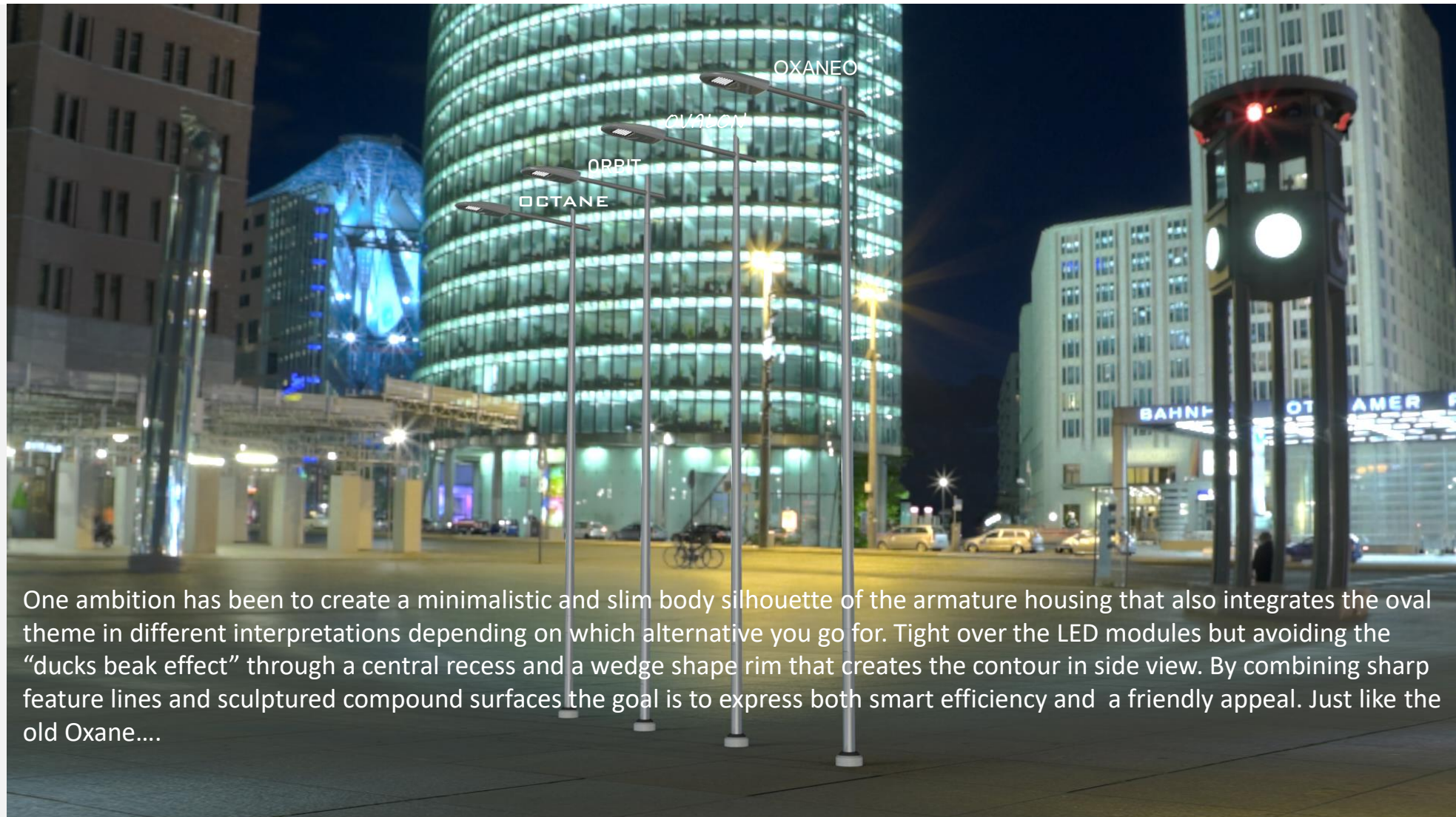
zachauღისაპ

Design Guideline from Zumtobel:  
Keep OXANE's main design spirit i.e. ovoid and slim. With flat surfaces on top and bottom to allow for smart features.





The general design philosophy behind Oxane Neo is to stick to a concept that has proven successful and to incorporate new functional and technical solutions. Customers like communities and companies shall recognize the original Oxane in the new concept. There has to be a twist though to indicate the new content and that almost 15 years have passed since the original design was made.



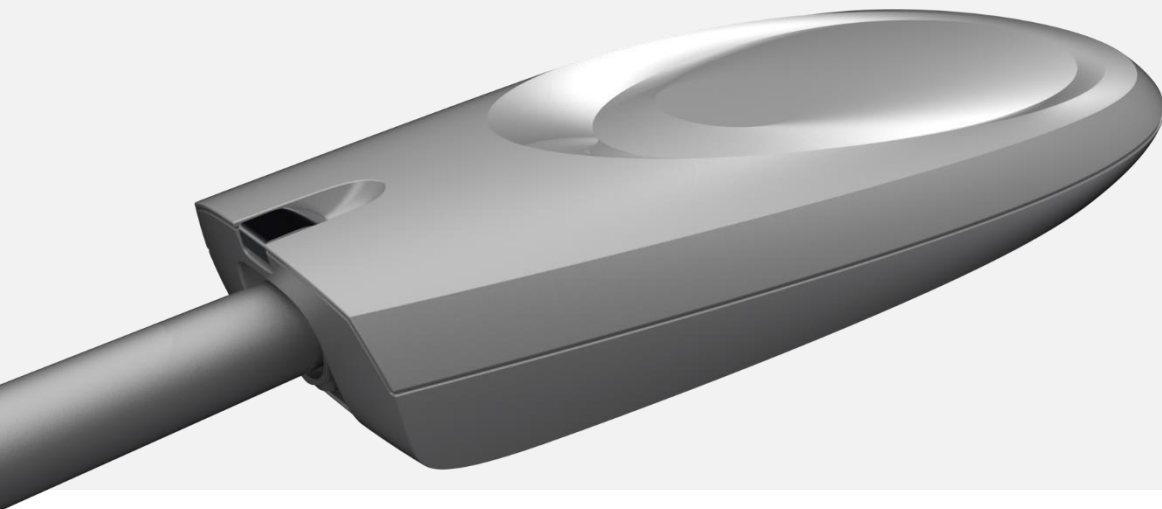
One ambition has been to create a minimalistic and slim body silhouette of the armature housing that also integrates the oval theme in different interpretations depending on which alternative you go for. Tight over the LED modules but avoiding the “ducks beak effect” through a central recess and a wedge shape rim that creates the contour in side view. By combining sharp feature lines and sculptured compound surfaces the goal is to express both smart efficiency and a friendly appeal. Just like the old Oxane....



*Both traditional and modern.*

Design Philosophy:

The Oxaneo is a true inheritor of the original Oxane. It is elliptic and streamlined with some accent creases that underlines the oval theme. It is slim and compact over the LED boards through its local recess that is eliminating the “ducks beak” from side view. The centre of this area indicates the position of the Zhaga unit.





*Fast and articulated.*

Design Philosophy:

The Ovalon is also pronouncing the oval theme. It holds more crease lines and leaves a sharper impression. More distinct in its surfacing and silhouette it can be anticipated as very accurate. It is slim and compact over the LED boards through its local recess that is eliminating the “ducks beak” from side view. The centre of this area indicates the position of the Zhaga unit. The upper rear part has a more complex compound surface that indicates the intersection with the spigot and pronounces the “easy opening” locker.





*Intelligent and friendly.*

Design Philosophy:  
The Orbit creates a super ellipse out of the original oval. A soft rectangle or a circle with corners - depending on how you see it... The overall surfacing is quite soft but the super ellipse crease lines adds a more defined character. The ambition is to reflect smartness and pleasantness in combination.

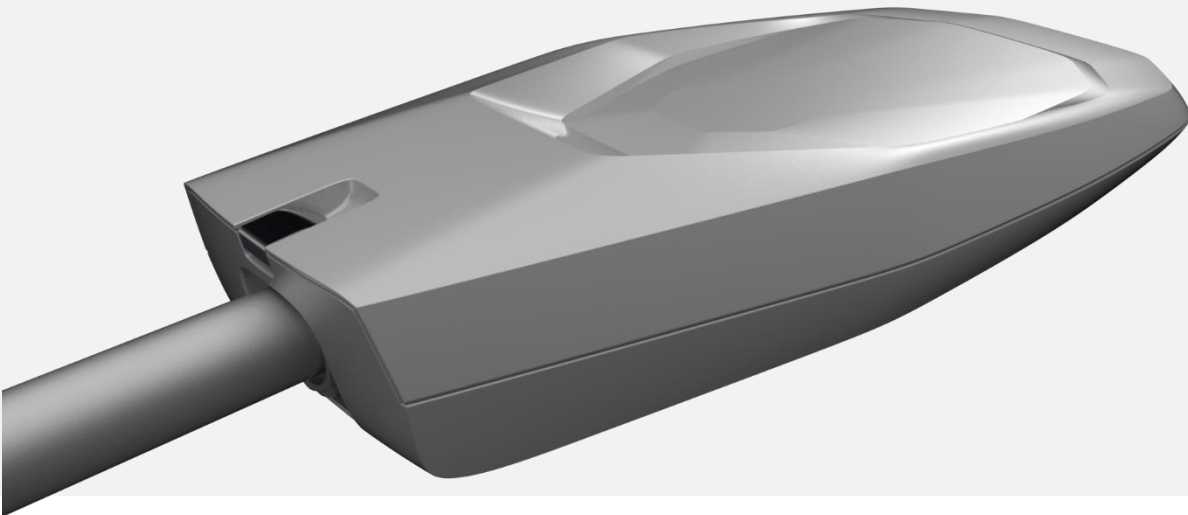




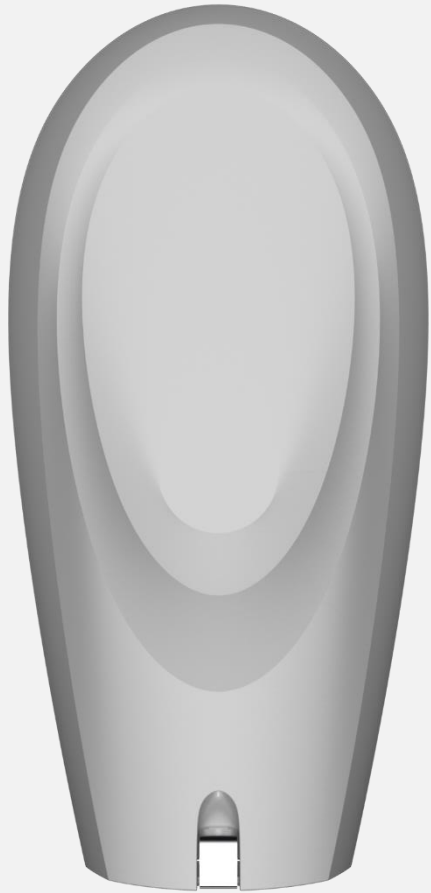
*Edgy and focused.*

Design Philosophy:

In Octagon the oval has been polygonised. Still with a quite soft overall surfacing. The original Oxane theme is still there but interpreted in a new way. Low and compact over the LED boards and still meeting up with the spigot space. The central surface changes over length from being recessed to protrude.



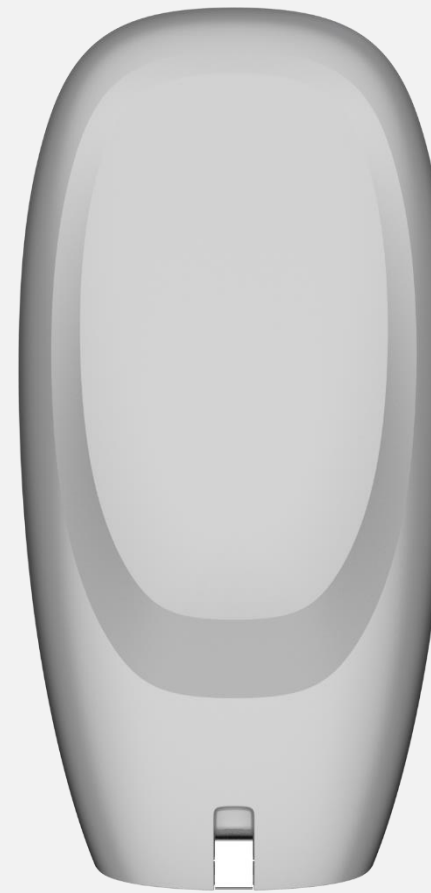
OXANEO



*OVALON*

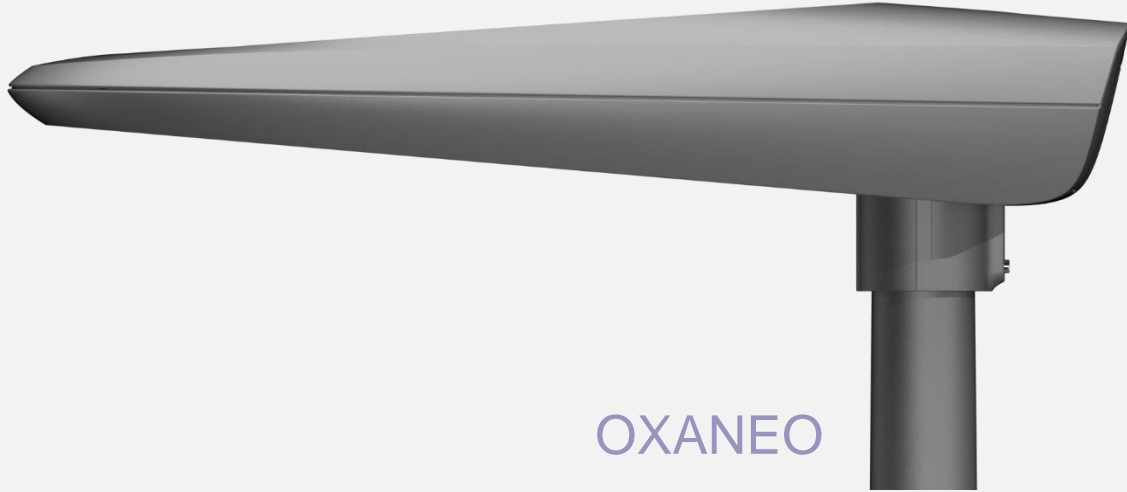


ORBIT



OCTANE





OXANEO



OVALON



ORBIT



OCTANE

OXANEO

*OVALON*

ORBIT

OCTANE



OXANEO

*OVALON*

ORBIT

OCTANE



ZUMTOBEL Group

OXANE NEO

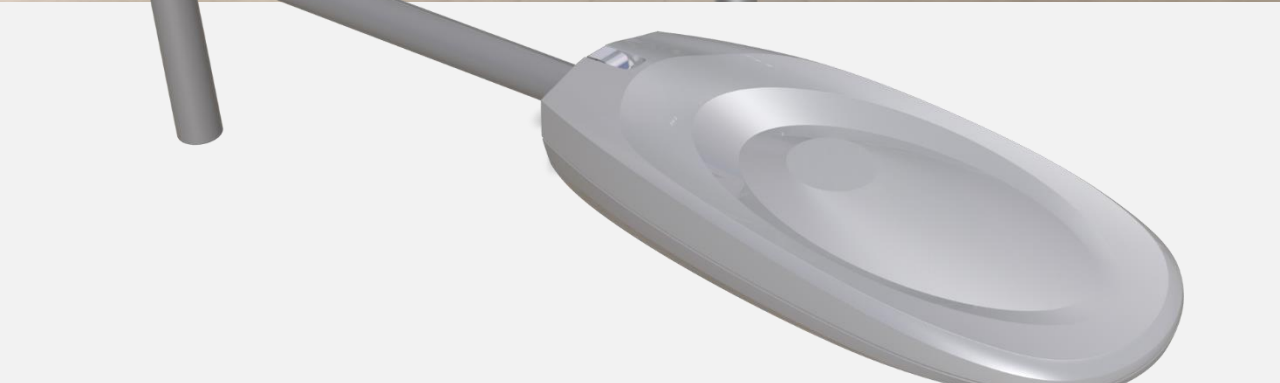
zachau8isep



2023-07-28

OXANEO

13

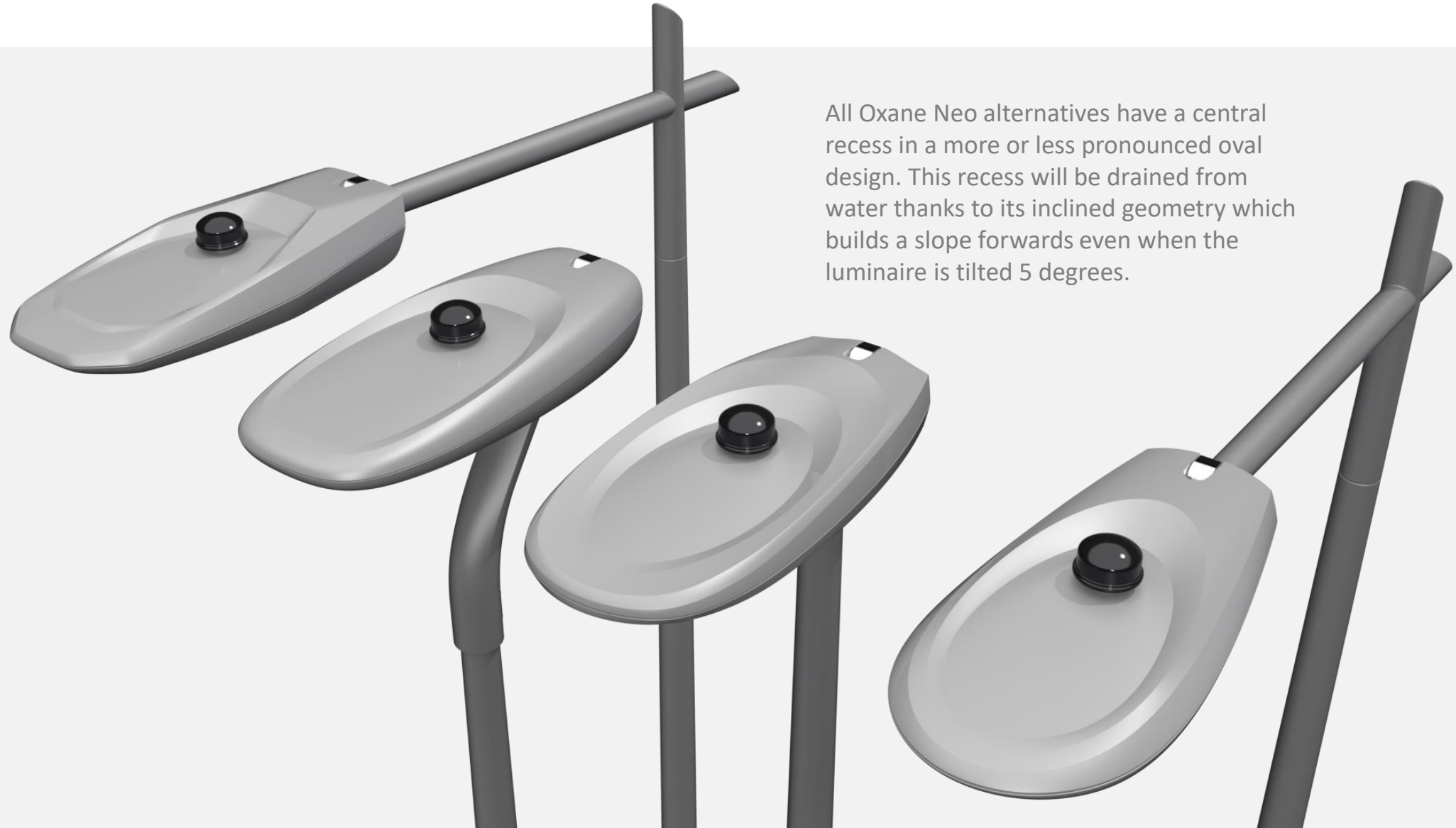








All Oxane Neo alternatives have a dedicated, round and flat area to put the Zhaga unit on.



All Oxane Neo alternatives have a central recess in a more or less pronounced oval design. This recess will be drained from water thanks to its inclined geometry which builds a slope forwards even when the luminaire is tilted 5 degrees.

To create a more homogeneous design we suggest that two types of spigot covers will be available as optional parts for customers. One that takes care of the vertical post solution and one that covers for horizontal concepts. Maybe a composite lid with a click-in-function will be sufficient and this has to be prepared for in the casting of the lower body part.



















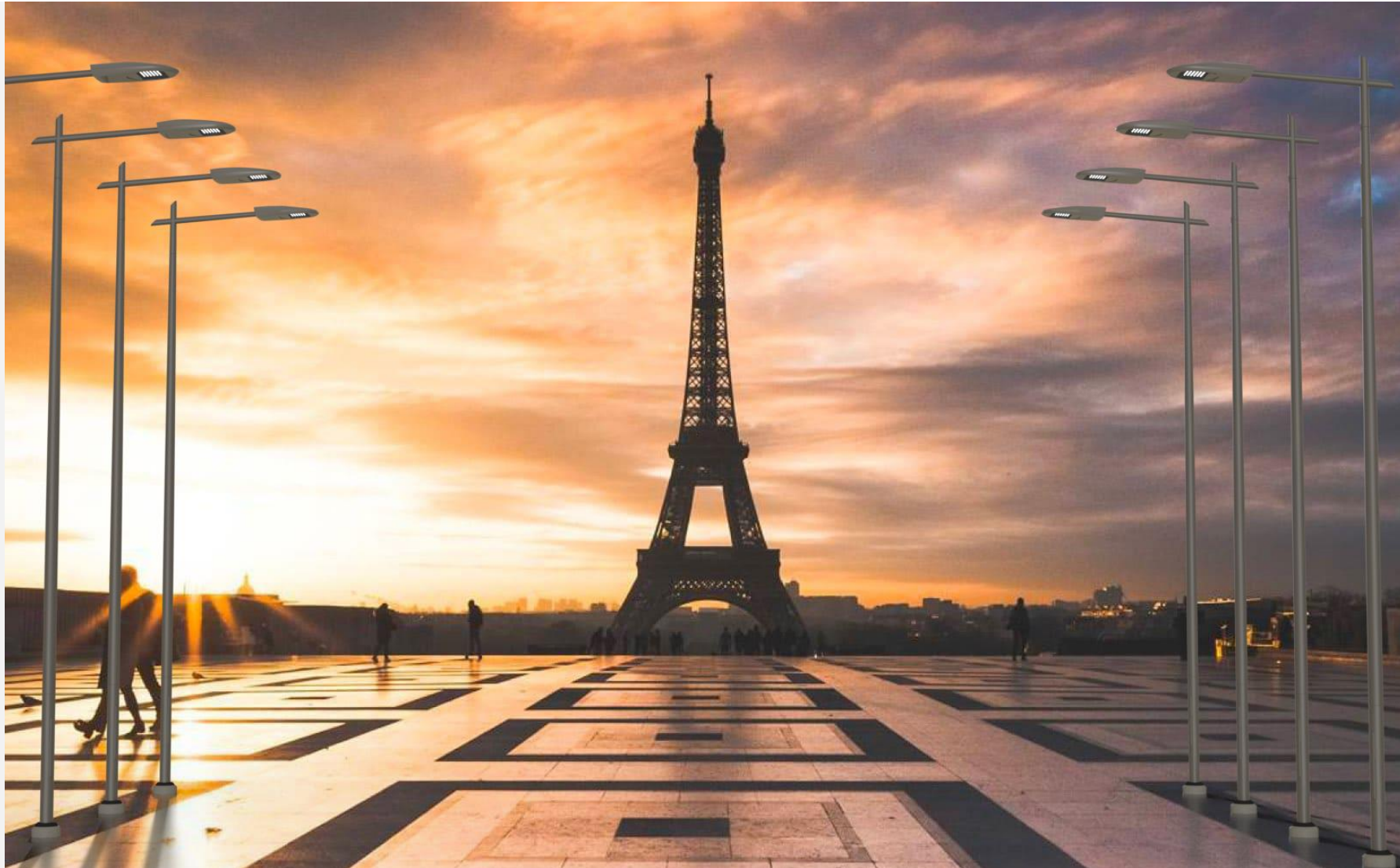




One reflection that may strike you is the importance of managing the heritage in an innovative way. To keep the essence and add novelty in the form of functional and technical improvements. And to reflect that in a new styling/design that has its roots in a previous generation so that people can recognize the ancestor and relate to that. When it comes to the Oxane luminaire the ambition is that the Neo version will be the natural choice for customers that want to replace or complement the old one. And as important is that it will attract new customers so that it will be possible to expand the market share within the segment.

You have now seen four alternative sketch concepts. Each one of these can be developed and improved once you have made a selection. Maybe there are elements that you would like to combine within one concept. Since the alternatives are developed from the same tradition and philosophy this may be fully thinkable...







zachau **n** design

Hans Philip Zachau, M.Sc.  
M +46 708 200530  
z@zachau-design.se

Snäckvägen 24A  
SE-414 75 GÖTEBORG  
Sweden  
www.zachau-design.se